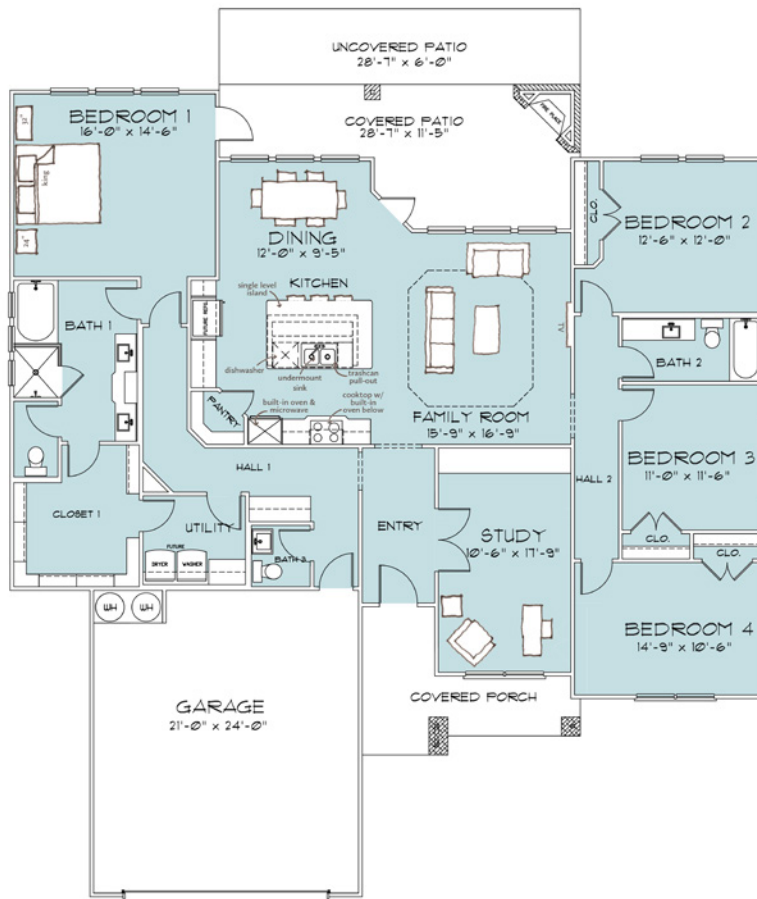


# 2323 Dunn's Hollow Dr

2346 sqft • 4 Bedrooms • 2 1/2 Bathrooms



LEARN MORE ONLINE:  
[bit.ly/2323dunnshollow](https://bit.ly/2323dunnshollow)

## The Bluff

AT DUNN'S HOLLOW

[www.omegabuilders.com](http://www.omegabuilders.com)

Lisa Comeau  
254.307.8983  
[Lisa.Comeau@OmegaBuilders.com](mailto:Lisa.Comeau@OmegaBuilders.com)



Plans, elevations, features and options are subject to change without prior notice or obligation. Elevation materials may vary per community specifications. Some listed features and options may not be available on this home and/or are subject to change. Square footage is approximate and may vary upon elevation and/or plan options. Images are conceptual drawings only and may show upgraded/mature landscaping that may not represent this community. Consult an Omega Builders representative for working drawings, actual dimensions, features, options and other information.

bda-camden | rev 05-14-19